

Five enabling conditions to advance watershed conservation

BCWF Wetland Education Workshop “The future of wetlands in the Lower Mainland: a workshop to strengthen capacity and collaboration”

World Wetland Day - February 2, 2015, Burnaby, BC

Lee-Anne Walker, Executive Director, Elk River Alliance, MA Environment and Management/BA Recreation Administration



lee-anne@elkriveralliance.ca

www.elkriveralliance.ca

(250) 423-3322

Elk River Watershed







09/18/2012







Ladder of Environmental Citizenship

Leads
Behaves
Values
Understands
Appreciates
Aware
Unaware
Unsupportive







Water – unifying element; guiding force

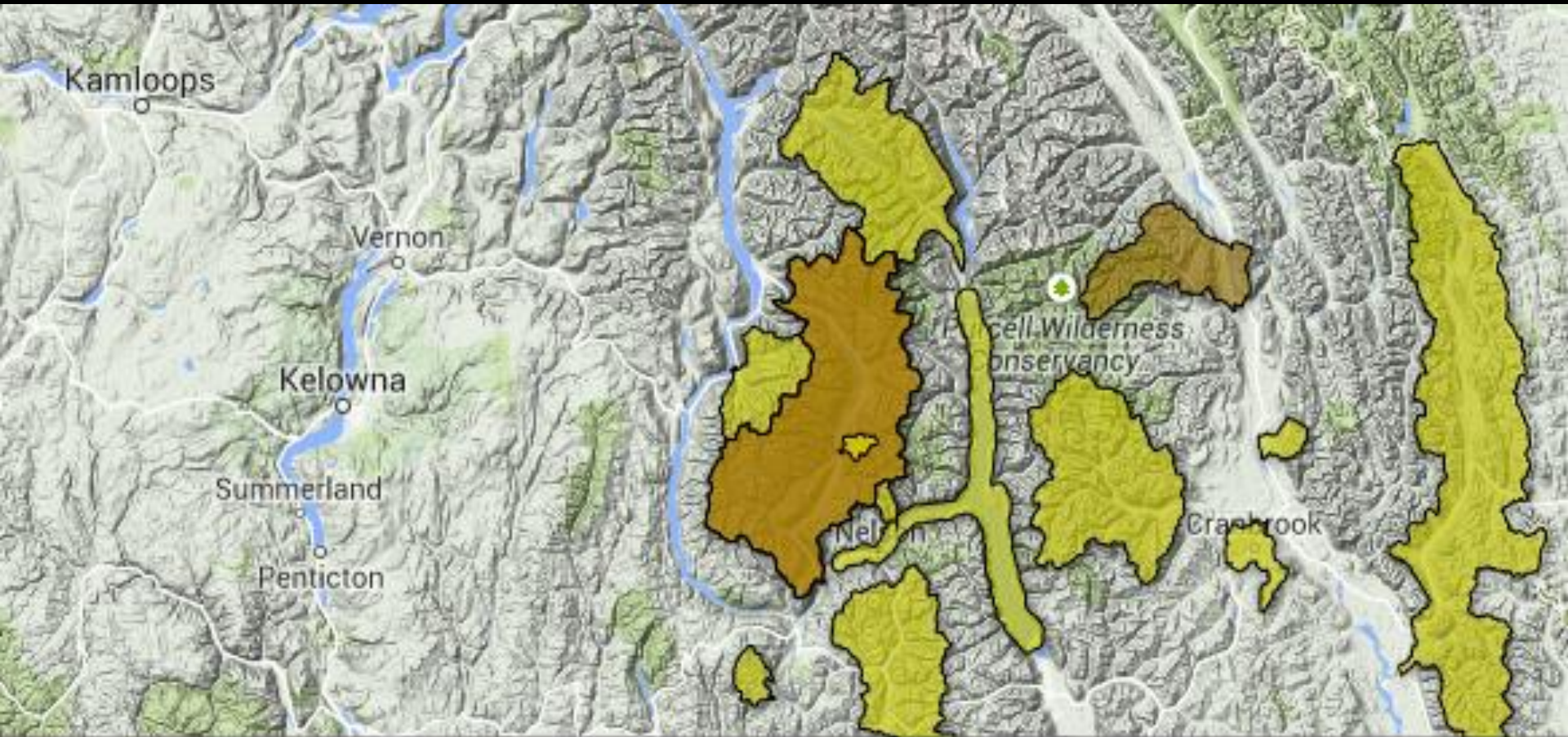


Citizen Science





Member map of community-based water groups in the Columbia Basin



Choices – What to sustain and develop?





09/06/2012

Conventional to include Citizen Science



Balancing Citizen/Professional Science

Benefits

- Restore trust
- Practical
- Open-ended decision making process
- Citizens have a say in solutions
- Positively contribute to scientific expertise
- Increase water literacy and compliance
- Maximize fiscal and human resources

Risks

- Verification and control of authoritative knowledge
- Peer review process dethroned
- Time consuming
- Effective at local level yet some water issues are larger in scale e.g. water exports, impacts of climate change
- Resistance to change current decision making framework



Vision for Water Sustainability





Community wish to influence decision-makers



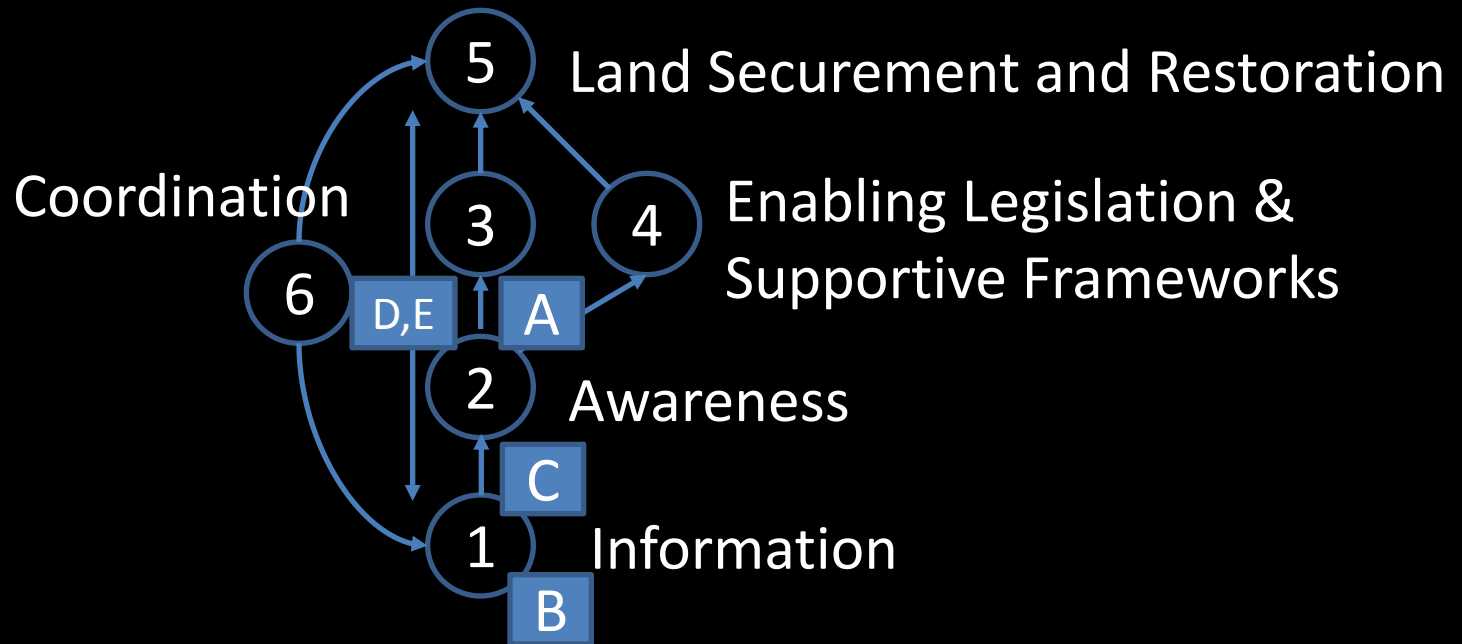
Elk River Alliance – intergenerational learning to solve issues facing our watershed



Elk River Alliance Goals:

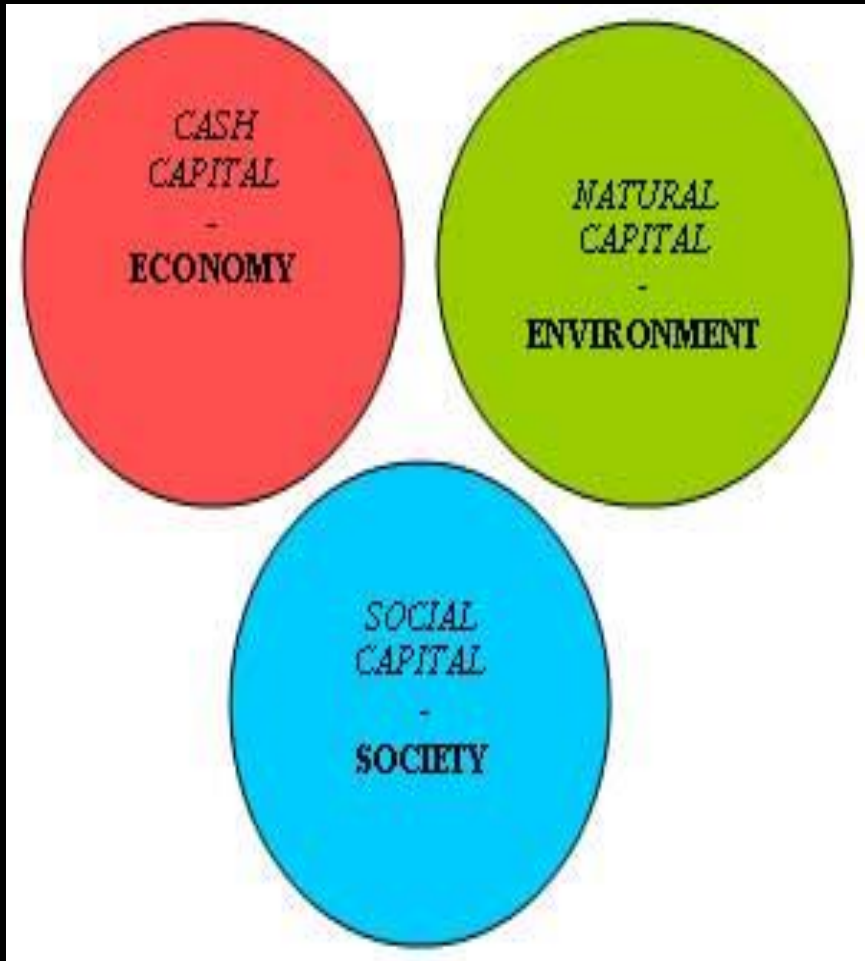
1. Raise community awareness and understanding about our watershed.
1. Facilitate community dialogue and engagement to better inform sustainable water decision making.
1. Monitor aquatic health to prioritize our collective effort in activities that care for aquatic ecosystems.
1. Operate in a fiscally responsible, open and transparent, responsive way with broad community representation.

Framework of 5 Enabling Conditions



- A) Obtain buy in
- B) Sufficient information
- C) Share information
- D) Monitor and report back in a transparent feedback loop
- E) Promote integrated adaptive management

1. View community participation as a strategic investment in social capital – buy in.



2. Work with community-based water groups to identify, assemble and consider all technical and factual information about the watershed.



3. Share information to foster collective support for water sustainability.

**ELK RIVER WATERSHED
VALLEY BOTTOM ASSESSMENT —
REPORT TO RESIDENTS ON RIVER HEALTH, PHASE 1**



4. Engage community-based water groups in the design of a monitoring and reporting process.



5. Create frameworks for integrated adaptive management to make sustainable water development decisions.

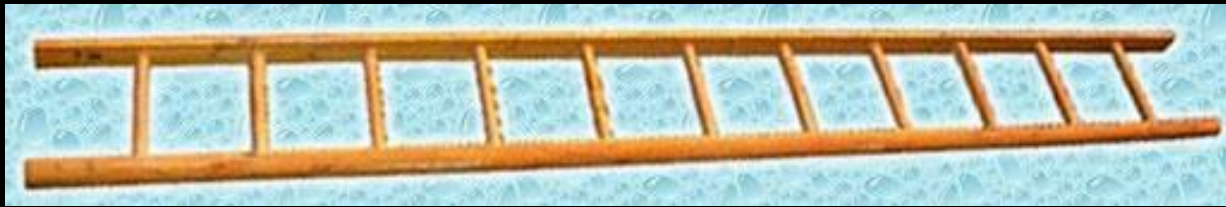


ELK VALLEY

CEMF

CUMULATIVE EFFECTS
MANAGEMENT FRAMEWORK

Bridging the Water Sustainability Gap



Citizens

- Legitimacy
- Capacity
- Trust

- Knowledge
- Share information
- Strengthen relationships
- Collaborative decisions
- Credibility
- Resources
- Mutual respect

Decision Makers

- Integrity
- Expertise
- Trust

Never doubt that a small group of thoughtful, committed citizens can change the world. Indeed it's the only thing that ever has.

- Margaret Mead



